

# SQESC 12200

## Brushless ESC

### 无刷电子调速控制器说明书

感谢您购买本产品!请您在使用前仔细阅读说明书,严格遵守规定的操作说明,使用者需具备一定电子基础和良好的焊接技术,错误的使用可能造成人身伤害和设备损坏。我们不承担因使用本产品或擅自对产品进行改造而引起的任何责任,包括但不限于对附带损失或间接损失的赔偿责任。

Thanks for buying this product! Please read the instructions carefully before use and strictly abide by the specified operating instructions. Users must have a certain electronic foundation and good welding skills. Wrong use may cause personal injury and equipment damage. We do not assume any liability arising from the use of this product or unauthorized modifications to the product, including but not limited to liability for incidental or indirect losses.



1. English instruction manual .....	01 - 03
2. 中文说明书 .....	04 - 06



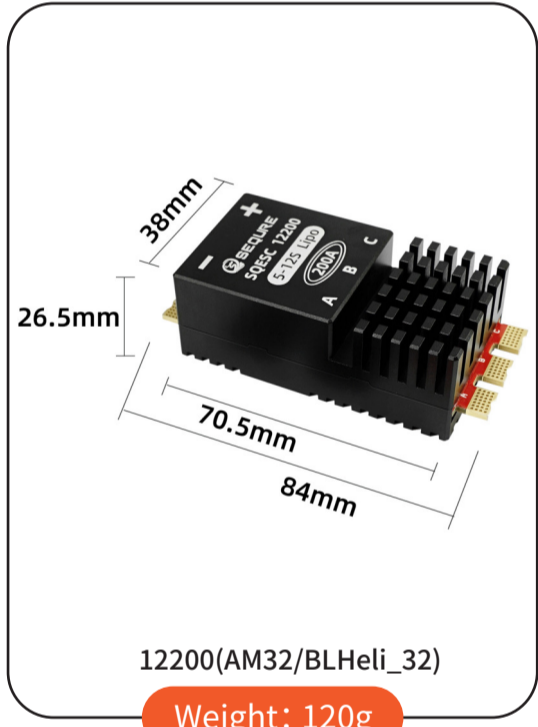
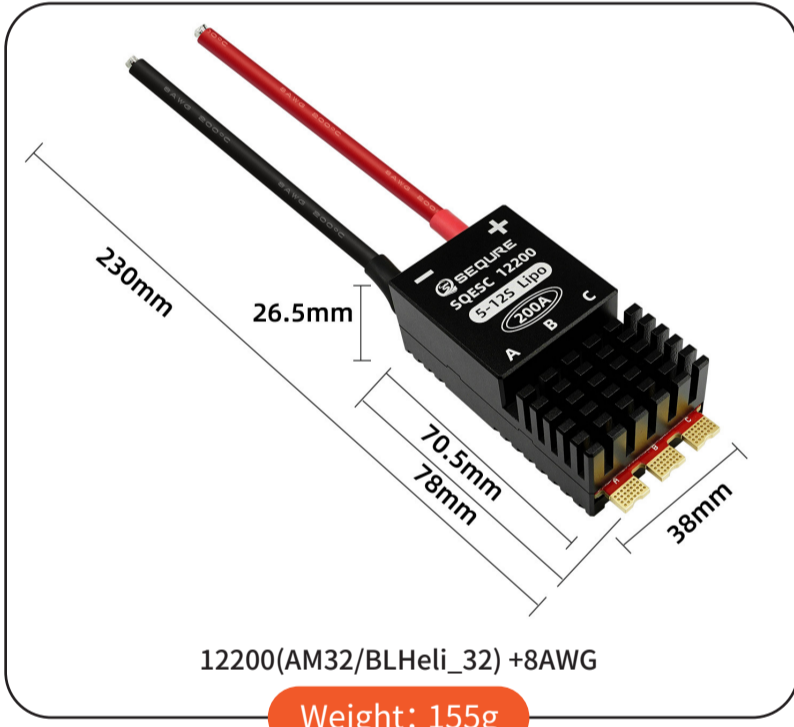
## 1 PRODUCT DESCRIPTION

- Adopting 32-bit high-performance processor STM32G071, with a working frequency of up to 64MHz and maximum support 128KHz motor PWM frequency.
- Adopts high-power MOSFET, and combines with CNC metal radiator, this esc dissipates heat effectively under high current load and works stably & continuously.
- Supports multiple motion modes such as unidirectional, bidirectional, and braked motors.
- Supports multiple protections such as low voltage protection, temperature protection, locked rotor protection, and current protection.
- The ESC automatically detects the throttle signal when it is powered on, supports all Dshot signals, and also supports signal protocols such as PWM, Oneshot and Multishot.
- Visual programming parameter adjustment tool supports motor timing, throttle calibration, current detection, motor steering, telemetry signal and other settings.
- Onboard RGB LED color light settings, multiple LED colors can be customized.
- Widely used in model airplane plant protection machines, multi-rotor drones, RC model ships and cars.

## 2 PRODUCT PARAMETERS

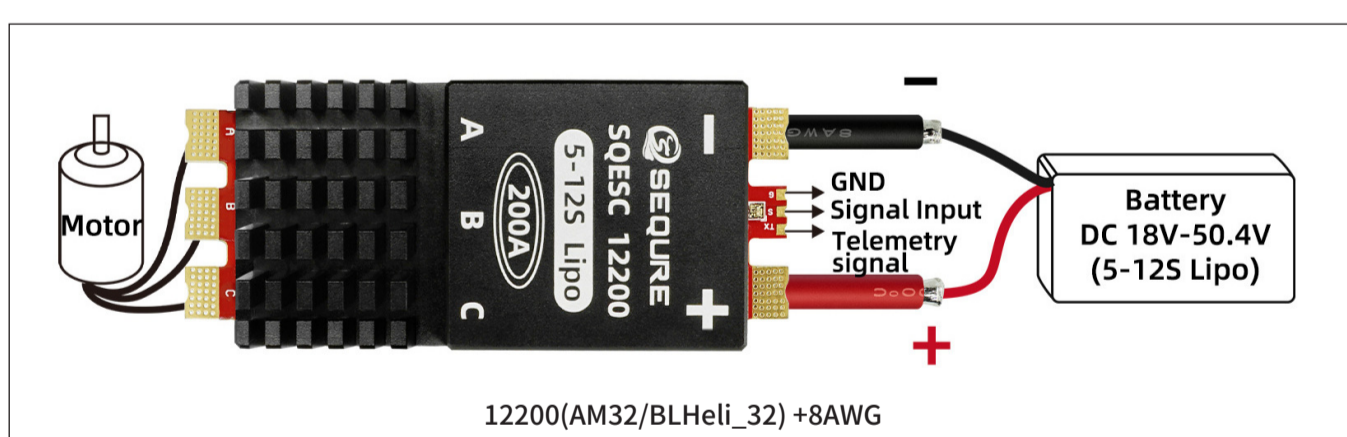
<b>Model</b>	SQESC 12200	<b>Programming parameter adjustment</b>	Support
<b>Processor</b>	STM32G071	<b>Throttle calibration</b>	Support
<b>Input voltage</b>	DC 18V-50.4V (5-12S Lipo)	<b>Timing angle setting</b>	Support
<b>Continuous current (good heat dissipation)</b>	200A	<b>Current detection</b>	Support
<b>Maximum current (good heat dissipation)</b>	250A	<b>Telemetry signal</b>	Support
<b>Support firmware</b>	BLHeli_32, AM32	<b>Motor steering settings</b>	Support
<b>BEC</b>	NO	<b>RGB LED color lights</b>	Support
<b>Signal protocol</b>	Dshot (All), PWM, Oneshot, Multishot, etc.	<b>Power cable (if any)</b>	8AWG
		<b>Application scenarios</b>	Suitable for multi-axis drones, fixed-wing aircraft models, multi-rotor drones, plant protection machines, model ships, RC model cars, and rock crawlers.

## 3 SIZE AND WEIGHT

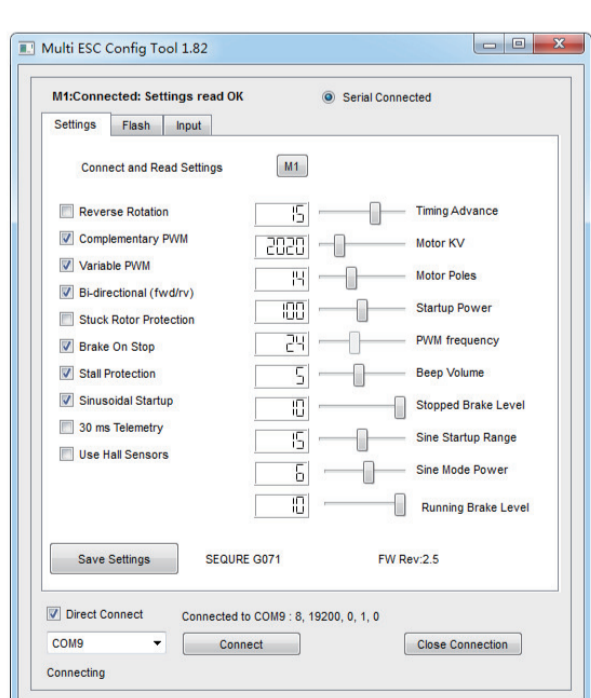


## SQESC 12200 Brushless ESC

## 4 WIRING DIAGRAM



## 5 PROGRAMMING PARAMETERS



## SQESC 12200 Brushless ESC

## 6 WARRANTY TERMS

1. For those performance faults caused by non-human factors within 3 months from the date of purchase, we provide repair & maintenance service for free. After 3 months, no labor fee will be charged for repairs. If you would like to replace parts, you must pay for the cost.
2. All man-made damage, faults caused by self disassembly & improper use, and all consumables like soldering tips are not covered by the warranty.

## 7 SAFETY PRECAUTIONS ⚠️

- Please do not flash unofficial firmware to avoid damage to the ESC.
- Please do not use it beyond the ESC operating voltage and current range.
- Please check and make sure the positive and negative polarity are correct before powering on.
- Please use the product in compliance with local regulations and ensuring safety.
- Please use accessories that meet safety standards and store them out of reach of children.



www.sequiremall.com  
info@sequiremall.com

## SQESC 12200 Brushless ESC