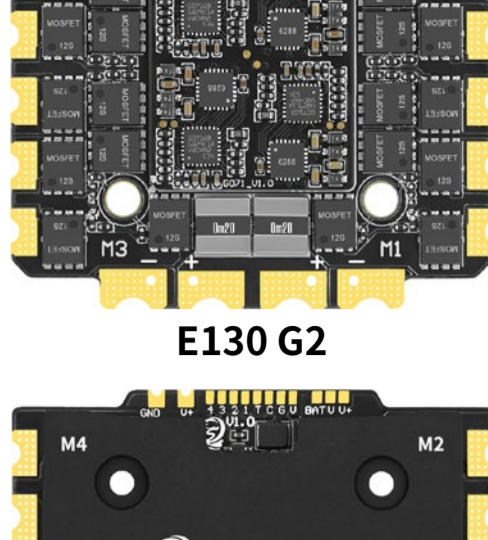


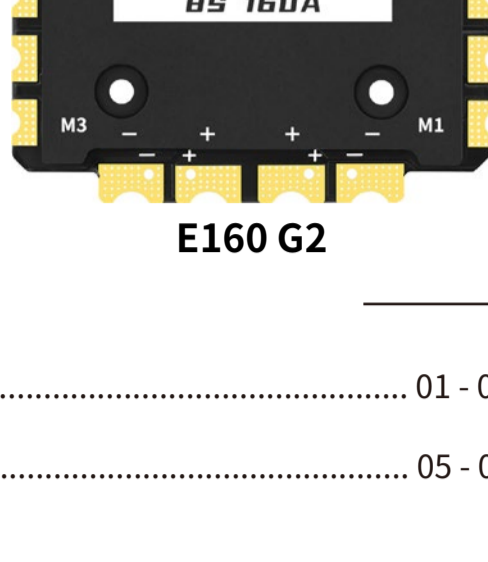
SEQUIRE E130 G2 & E160 G2 4-in-1 ESC

感谢您购买本产品!请您在使用前仔细阅读说明书,严格遵守规定的操作说明,使用者需具备一定电子基础和良好的焊接技术,错误的使用可能造成人身伤害和设备损坏。我们不承担因使用本产品或擅自对产品进行改造而引起的任何责任,包括但不限于对附带损失或间接损失的赔偿责任。

Thanks for buying this product! Please read the instructions carefully before use and strictly abide by the specified operating instructions. Users must have a certain electronic foundation and good welding skills. Wrong use may cause personal injury and equipment damage. We do not assume any liability arising from the use of this product or unauthorized modifications to the product, including but not limited to liability for incidental or indirect losses.



E130 G2



E160 G2

- 1. English instruction manual 01 - 04
- 2. 中文说明书 05 - 08



Note: Once this product is activated and affects secondary sales, it is not eligible for a 7-day return without reason

1 PRODUCT DESCRIPTION

- Adopting a 32-bit high-performance processor STM32G071, supporting AM32 | BLHeli_32 firmware.
- Wide voltage 4-12S input, E130 G2 single channel current lasts for 130A (peak 220A), E160 G2 single channel current lasts for 160A (peak 280A).
- Adopting low internal resistance high-power MOSFET, ultra-high efficiency conversion, reducing losses, and extending flight time.
- Dual pad design for power supply, parallel connection of dual batteries for easier soldering and stronger overcurrent capability.
- Adopting high-quality multi-layer PCB with ultra-high copper thickness and board mounted copper strip design, it increases overcurrent capacity, improves heat dissipation performance, and is not afraid of load pressure.
- Accurate switch spacing, excellent circuit design, solves the problem of out of step. Accelerate the response speed of ESC, control smoothly, and have a delicate touch.
- Support real-time transmission of multiple data: built-in ammeter, support telemetry transmission, real-time update of motor speed, temperature, current and other data.
- The ESC automatically detects the throttle signal when powered on, supports all Dshot signals, and also supports signal protocols such as PWM, Oneshot, and Multishot.
- Visual programming parameter tuning tool, supporting settings such as motor angle, throttle calibration, current detection, motor steering, telemetry signals, etc.
- The installation hole spacing design is 30.5 * 30.5mm, suitable for various types of racks, and the installation is pressure free.

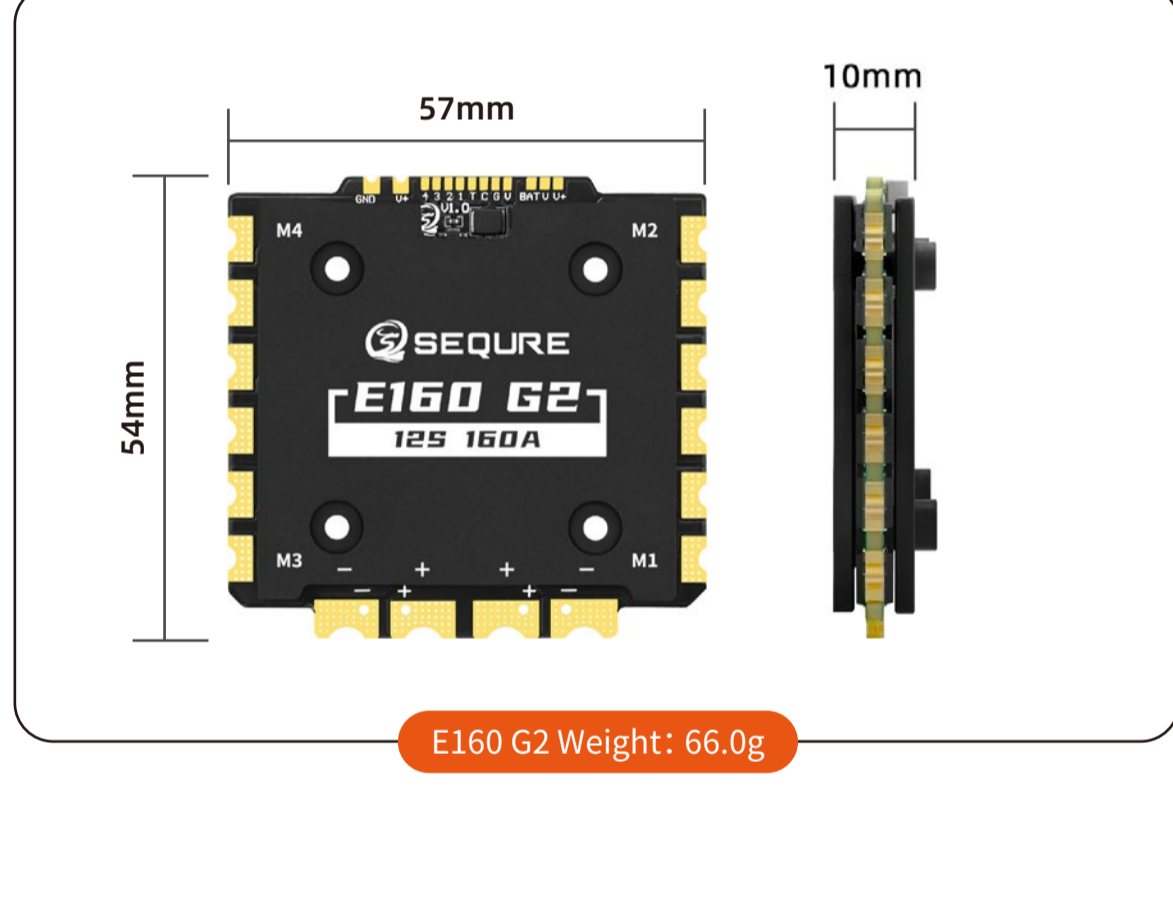
2 PRODUCT PARAMETERS

Model	E130 G2	E160 G2
Processor	STM32G071	
Working Voltage	4-8S (14-35.2V) Lipo / LiHV, 4-12S (14-53V) Lipo / LiHV	
Continuous Current	130A	160A
Peak Current	220A	280A
Firmware Version	AM32, BLHeli_32	
Support Protocol	Dshot(All), PWM, Oneshot, Multishot, etc.	
Telemetry Return	YES	
Galvanometer	YES	
BEC	16V 2A	
Mounting Hole Spacing	30.5*30.5mm, ø4mm/M3	
Product Size	54*57*7mm(L*W*H)	54*57*10mm(L*W*H)
Product Weight	43g	66g

SEQUIRE E130 G2 & E160 G2

01

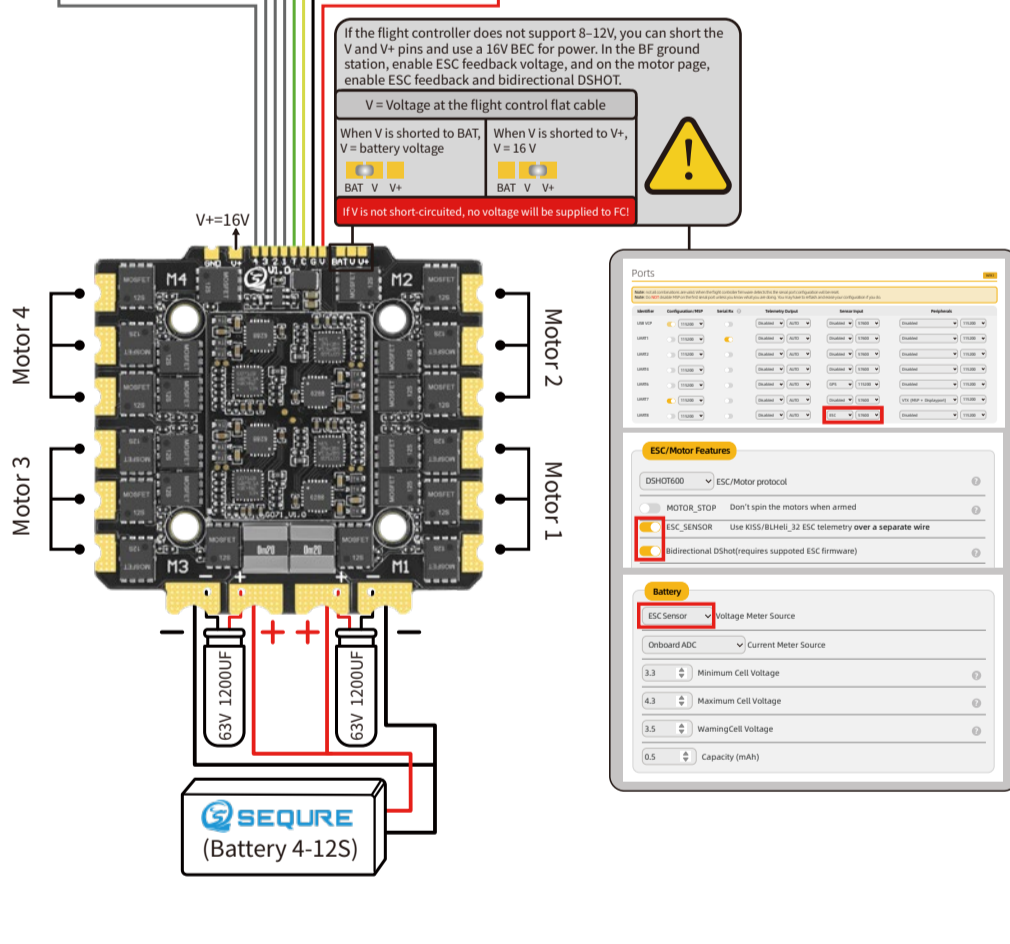
3 SIZE AND WEIGHT



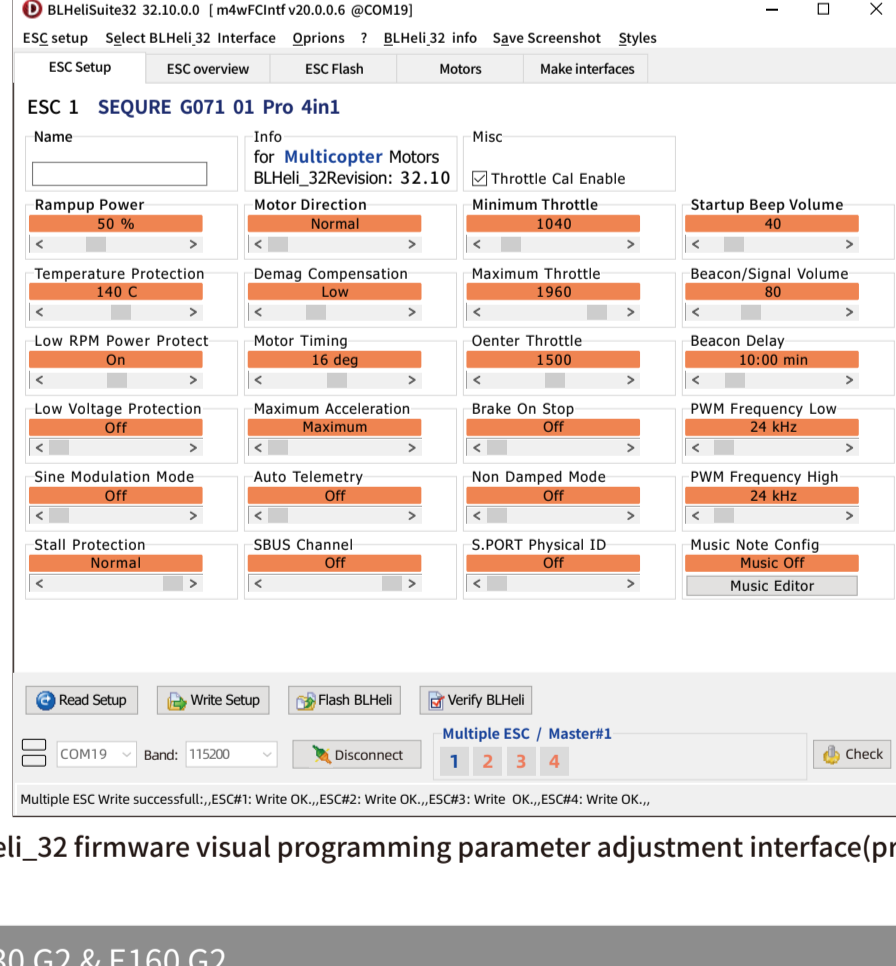
4 WIRING DIAGRAM

SEQUIRE E130 G2 & E160 G2

02



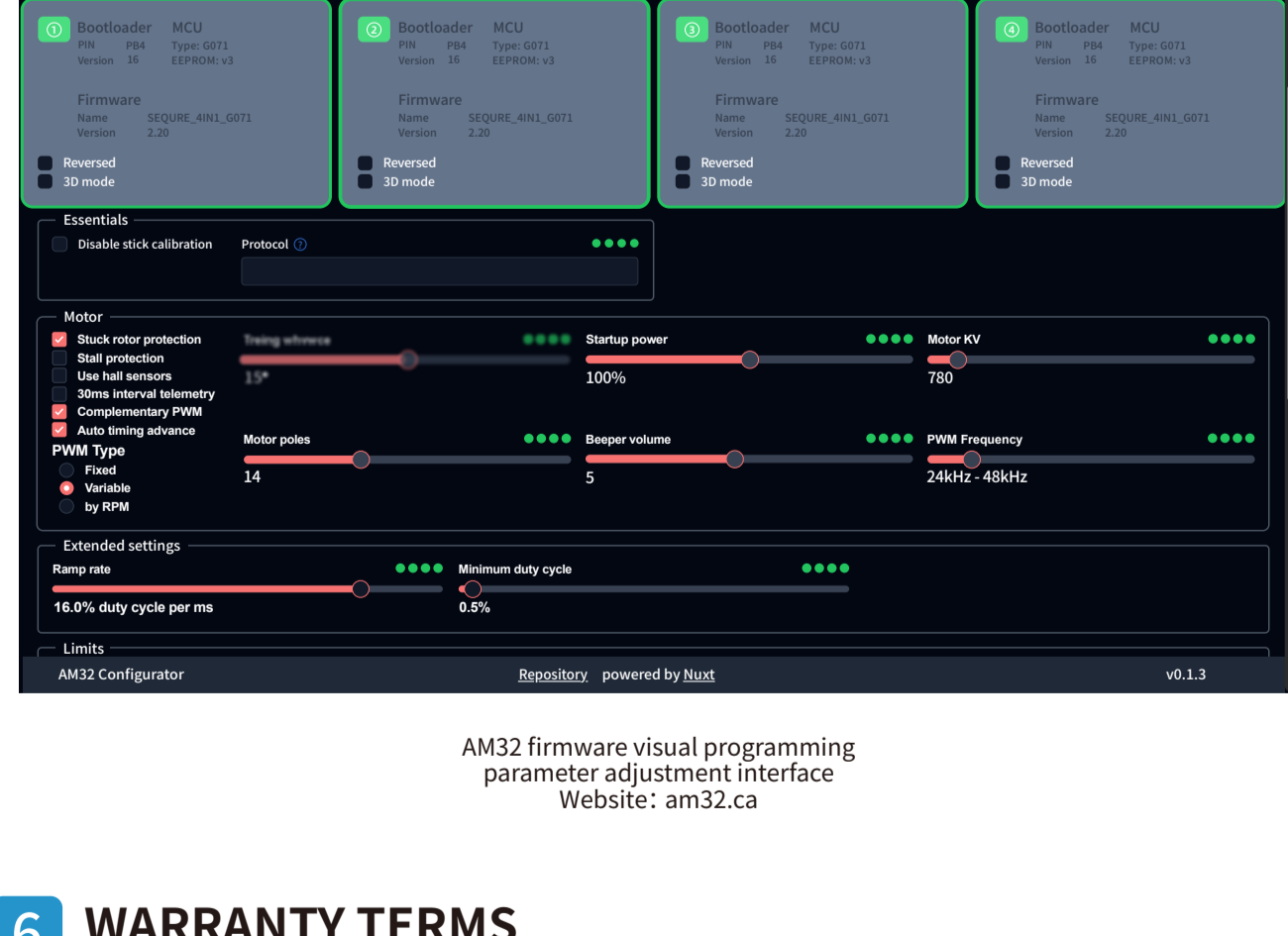
5 ESC SETTING



▶ BLHeli_32 firmware visual programming parameter adjustment interface(pre-release)

SEQUIRE E130 G2 & E160 G2

03



AM32 firmware visual programming parameter adjustment interface
Website: am32.ca

6 WARRANTY TERMS

1. For those performance faults caused by non-human factors within 3 months from the date of purchase, we provide repair & maintenance service for free. After 3 months, no labor fee will be charged for repairs. If you would like to replace parts, you must pay for the costs.
2. All man-made damage, faults caused by self disassembly & improper use, and all consumables like soldering tips are not covered by the warranty.

7 SAFETY PRECAUTIONS

- Please do not flash unofficial firmware to avoid damage to the ESC.
- Please do not use it beyond the ESC operating voltage and current range.
- Please check and make sure the positive and negative polarity are correct before powering on.
- Please use the product in compliance with local regulations and ensuring safety.
- Please use accessories that meet safety standards and store them out of reach of children.



www.sequiremall.com

info@sequiremall.com

SEQUIRE E130 G2 & E160 G2

04